

# Hascall-Denke "HD-IPT220-O-2.5" Omnidirectional Antenna

Base Station-Voice /Data/-Rail Services Agencies-PTC "Positive Train Control" Yard-Fleet-Maintenance



## Specifications

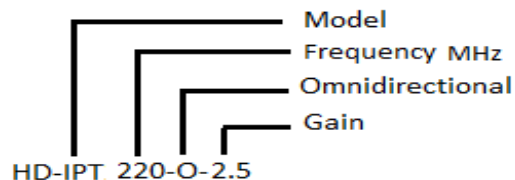
### MECHANICAL:

Mounting:	Pole, Tower, Track Side, Rapid Mount
Radome:	Fiberglass
Colors:	Off White ( Other Colors Special On Request)
Dimensions:	48" H x 1.75" OD (1219mmH X 45mm OD)
Shock & Vibration:	EN 61373, MIL-810G, & IEEE 1478
Water Intrusion:	Gas Pass (Vented)
Temperature:	-40°C TO +85°C
Weight:	9 lb ( 4 kg) Mount Included
Connector:	N-Female
Wind Rating:	125MPH
Mount:	Fits Pipe Dia. 2"~ 3"

### ELECTRICAL:

Frequency:	213-225 MHz
Gain:	2.5 dBi
VSWR:	1.5:1 Typical (operating Frequency) < 2:1 Entire Band
Input Impedance:	50 Ohms Nominal
Power:	100 Watts Max
Polarization:	Vertical Linear
Horizontal Beamwidth:	360 degrees
Vertical Beamwidth:	75 degrees
Interface:	Rapid-Mount

### PART NUMBERING IDENTIFICATION



**HASCALL-DENKE**

P.O. Box 909, Palmetto, Florida 34220-0909

Tel: 941.723.2833 • Fax: 941.723.1628

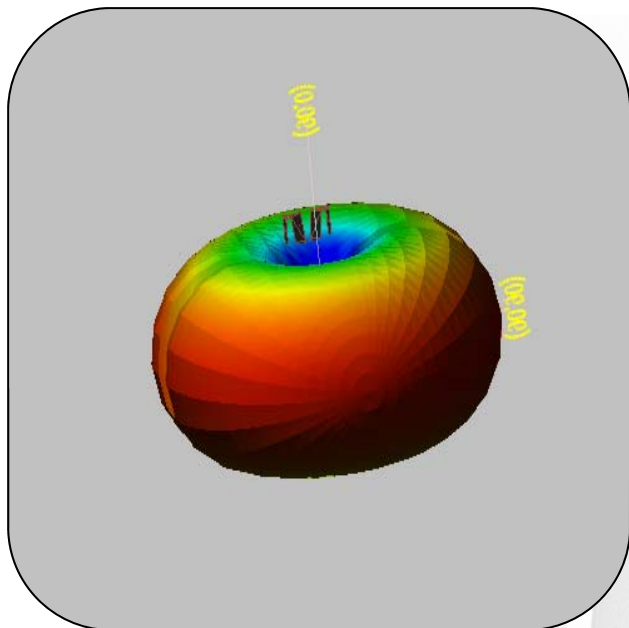
[www.hascall-denke.com](http://www.hascall-denke.com)

Form F042, Rev: \_

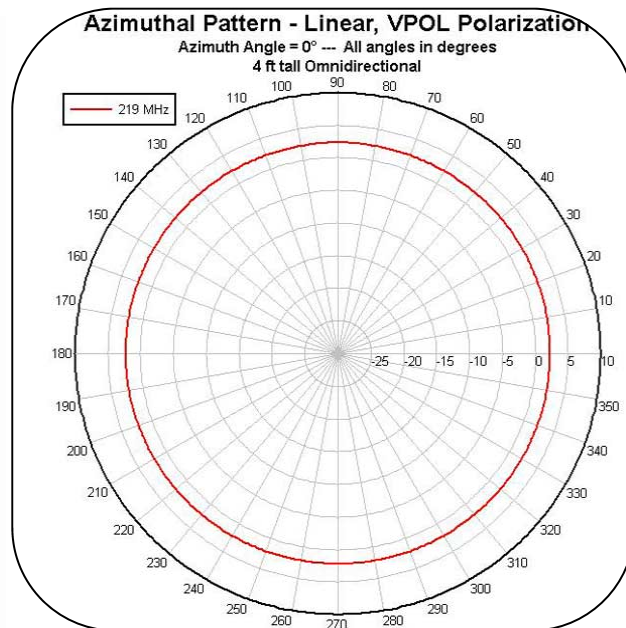
\*\*Specifications are subject to change without prior notice.  
\*\*All information on this product and the product itself is the property of and is proprietary to Hascall-Denke.

# Hascall-Denke "HD-IPT220-0-2.5" Omnidirectional Antenna

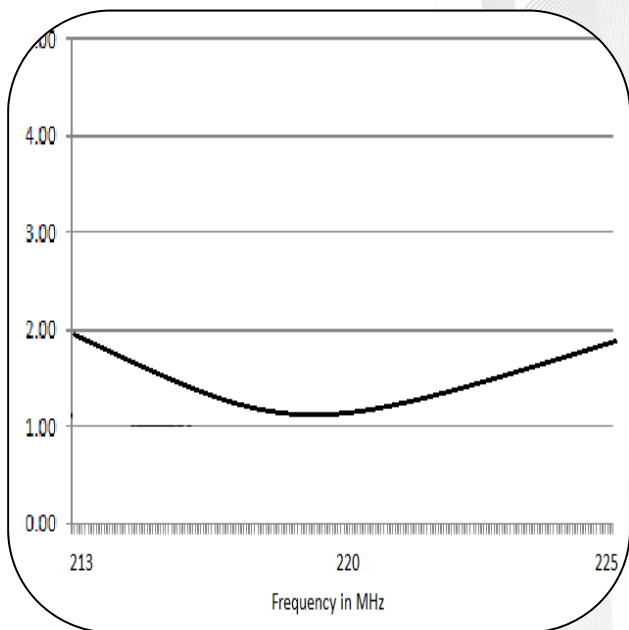
Base Station-Voice /Data/-Rail Services Agencies-PTC "Positive Train Control" Yard-Fleet-Maintenance



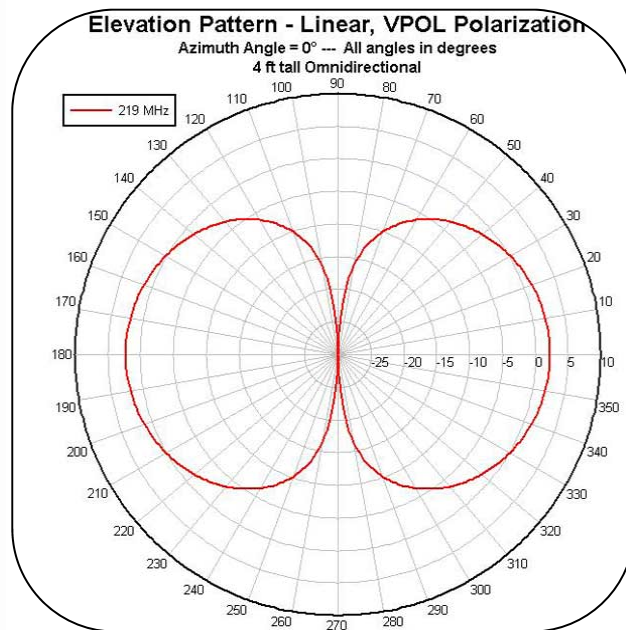
3D Reference



H-Plane / Azimuth



VSWR



E-Plane / Elevation

**HASCALL-DENKE**

P.O. Box 909, Palmetto, Florida 34220-0909

Tel: 941.723.2833 • Fax: 941.723.1628

www.hascall-denke.com

Form F042, Rev: \_

**\*\*Specifications are subject to change without prior notice.**

**\*\*All information on this product and the product itself is the property of and is proprietary to Hascall-Denke.**