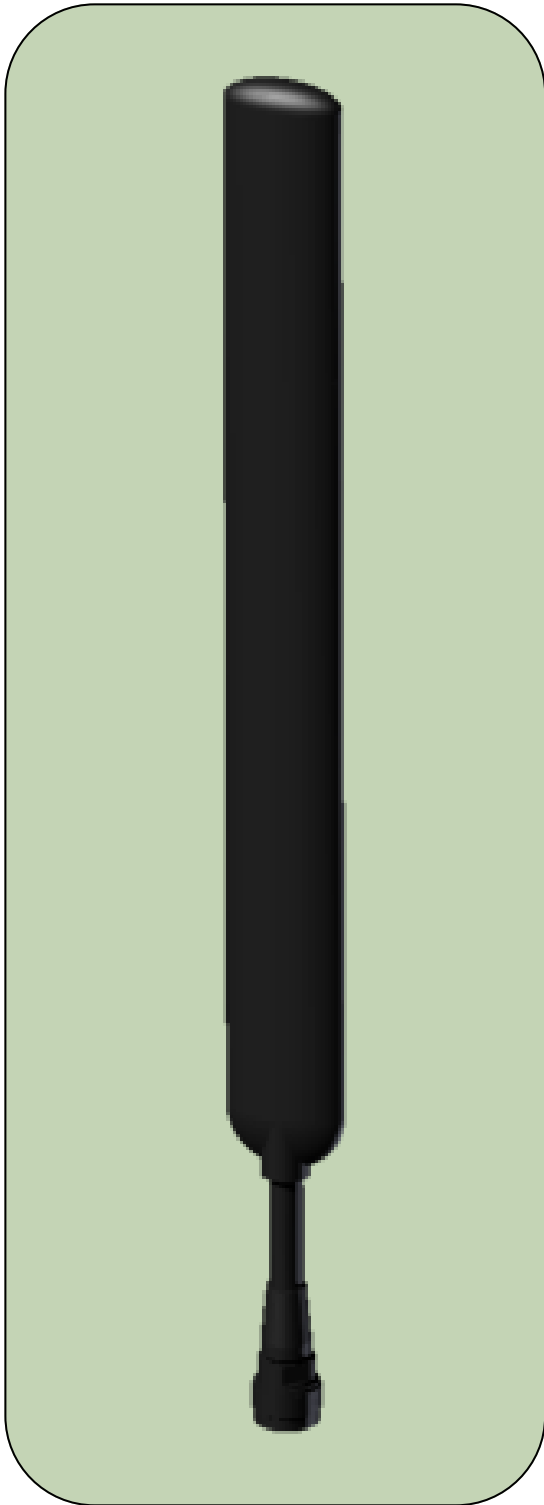


## Broadband Manpack Antenna



The MPDP1.7-2.5 dipole antenna is designed to be used in military manpack, commercial, and other applications where reliability is needed most. This antenna works with all radios within the 1700-2500 MHz band.

Being compact for its frequency of operation, this antenna is ideal for broadband operations requiring hemispherical coverage. The sleek profile, lightweight design, and flexible gooseneck section provide a dependable solution for handheld equipment or manpack operations.

The antenna is provided with state-of-the-art radiating elements essential for maximum reliability and superior performance.

Robust and tough, this antenna is housed in a thick UV stable radome and is constructed from corrosion resistant materials for reliability in the harshest environments.

- **Broadband**
- **Low VSWR**
- **Hemispherical Coverage**
- **Ground-to-Air or Ground-to-Ground Ready**
- **Protective Gooseneck Armor over Coax**
- **Built to meet MIL-STD-810F**



# Broadband Manpack Antenna

## Specifications

### ELECTRICAL:

**Frequency Range:** 1700-2500 MHz

**Gain:** 6.0 dBi +/- .5

**VSWR:** < 2.0:1 Typical  
2.5:1 Max

**Input Impedance:** 50 Ω Nominal

**Power:** 25 Watts PEP

**Polarization:** Vertical

**Radiation Pattern:** Azimuth: 360°  
Elevation: 32°

**Input Connector:** Type N Male

### MECHANICAL:

**Overall Height:** 35.5in. (0.90 m)

**Radome:** 1.5 in. Oval (38 mm)

**Net Weight:** 0.95 lb. (0.43 kg)

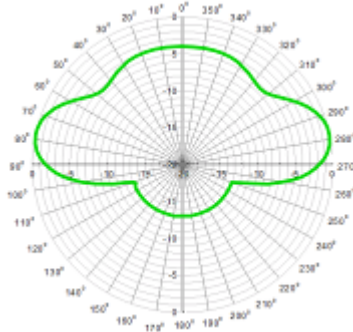
**Color:** Black/Green/Tan/Grey

**Deflection:** +/- 45°

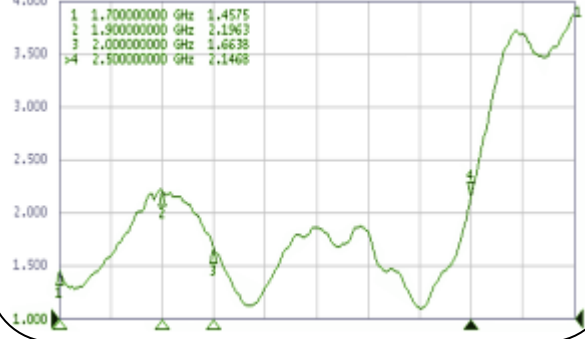
**Compliance:** Built to meet: MIL-STD-810F

**Mounting:** Type N Male

**ELEVATION PATTERN REFERENCE**



**VSWR REFERENCE**



\*\*All information on this product and the product itself is the property of and is proprietary to Hascall-Denke.

\*\*Specifications are subject to change without prior notice.



Made in the USA  
ISO 9001:2008 Certified  
(1Y17500)

P.O. Box 909, Palmetto, Florida 34220-0909  
Tel: 941-723-2833 • Fax: 941-723-1628  
www.hascall-denke.com