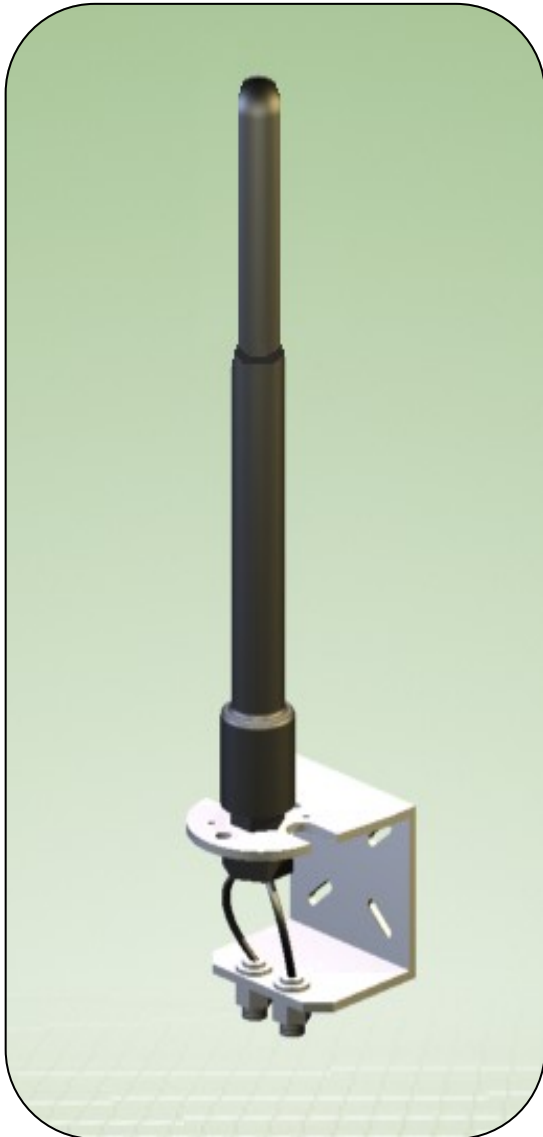


Dual Input Omnidirectional Antenna



The FXDP2.2-2.4 & 4.8-5.2-7-D antenna is designed to be used in military, commercial, and other applications where reliability is needed most. This antenna works with all radios within the 2200-2400 & 4800-5200 MHz bands.

The antenna is designed to provide maximum Data, Video & Voice performance in a wide range of applications whether used in a MIMO, Diversity, or Separate Radio application.

The antenna is provided with state-of-the-art radiating elements essential for maximum reliability and superior performance. The elements are engineered for additional isolation between the inputs.

Robust and tough, this antenna is housed in a thick fiberglass radome double reinforced at the base and is constructed from corrosion resistant materials for reliability in the harshest environments.

- **Dual Input Design**
- **Tower Space Reduction**
- **MIMO, Diversity, or Separate Radio Ready**
- **Port-to-Port Isolation –40 dB Typical**
- **Ideal Pattern/Beam Width and Sidelobe Control**
- **Designed to Reduce BER (Bit Error Rate)**
- **Mount Included-Installed at Factory**
- **Plug & Play Design**



Dual Input Omnidirectional Antenna Specifications

ELECTRICAL:

Frequency Range: 2200-2400 & 4800-5200 MHz

Gain: 7.0 dBi +/- .5

VSWR: < 2.0:1 Typical

Input Impedance: 50 Ω Nominal

Power: 50 Watts

Polarization: Vertical

Port-to-Port Isolation: -40 dB Typical

Radiation Pattern: Azimuth: 360°
Elevation: 23°

Input Connector: (2) Type N Female

MECHANICAL:

Overall Height: 30 in. (0.76 m)

Radome Diameter: 1.25 in. (31.8 mm)

Maximum Wind Load: 150 mph (241 km/h)

Net Weight: 2 lb. (0.90 kg)

Operational Temps: -40° to +185°F
(-40° to +85°C)

Color: Black/Green/Tan/Grey

Mounting: Stainless Steel Base (Pipe/Wall/Mast)
(Up to 2" (50.8 mm) Dia. Mast U-Bolts)

****All information on this product and the product itself is the property of and is proprietary to Hascall-Denke.**

****Specifications are subject to change without prior notice.**

